



Buddhist Council of NSW

Working for the Buddhist Community

Annual Report 2016



OUR FOUR PILLARS OF ACTIVITY



MEMBER HELP

Providing advice, resources, information and ways to reduce costs to help our member organisations.



BUDDHIST EDUCATION

Teaching values and life skills to young people in government schools. Training and preparing volunteers to provide service to others in the community.



BUDDHIST CARE

Providing care and support to those in need through our chaplaincy programs in hospitals, correctional facilities and nursing homes.



BUDDHIST CONNECTION

Facilitating and supporting community projects. Reaching out and responding to enquiries from society, media, other religions and government.

Our Chairman



The end of 2016 marks ten years since I was elected in December 2006. Back then I had no idea how much I would learn at the Buddhist Council. I learned that the community is very diverse. While there are many practices and forms of Buddhism, sometimes we do not fully appreciate people from other Buddhist cultures and traditions. The Buddhist Council therefore tries to be inclusive of all traditions and cultures.

I learned that many of our member organisations struggle with the day-to-day challenges of running a Buddhist centre. This includes raising funds, managing volunteers, running events, and complying with government regulations. When we help

a Buddhist group, there are probably many other groups with the same problem. We welcome new member organisations who need help to incorporate, grow and become successful. Our motto is "working for the Buddhist community". So please tell others about how we help.

I learned that there are many people in society who are searching for a happier way to live and when they find Buddhism, they know it's what they are searching for. The Council therefore helps people find a Buddhist group where they can follow a Buddhist tradition.

I would like to recognise the significant

contribution of Anita who retired this year after six very busy years as our General Manager. On behalf of all of us at the Buddhist Council, I sincerely thank her for her compassion, generosity and dedication to the community. We will miss her and we wish her well for the future. I also wish to thank our member organisations, our dedicated and hardworking staff, the many volunteers in schools, hospitals and prisons, our generous donors, friends and supporters and my fellow directors on the board. I hope you find this annual report informative.

**With loving kindness,
Brian White
Chairman**

General Manager

It has been a very busy and rewarding few months since joining the Buddhist Council. I must extend my thanks to Anita, who is leaving some very big shoes to fill. Her attention to detail and dedication have helped make the transition a smooth one.

I would also like to acknowledge our office staff and volunteers. Their support, hard work and patience has kept the Buddhist Council offices running smoothly during the transition period.

Next year offers some exciting new challenges. We will be extending and offering a broader range of services to the community in 2017 through our chaplaincy and SRE programs. Our membership services team will also increase its activities to further support the membership.

I look forward to sharing the details of these initiatives over the next few months.

**Warm regards,
Glenn Sloan**



We will be extending and offering a broader range of services to the community in 2017 through our Chaplaincy and SRE programs.



Buddhist Special Religious Education

(SRE) in Governments Schools

The Buddhist Council provides over 73 Special Religious Education (SRE) teachers to approximately 65 public schools around NSW, most of which are primary schools. This is an improved result compared to last year as some of our SRE teachers attend more than one school. With the current number of SRE teachers, we are able to reach around 3900 students. We are now putting more effort into the SRE training courses to satisfy the growing demand for SRE teachers.

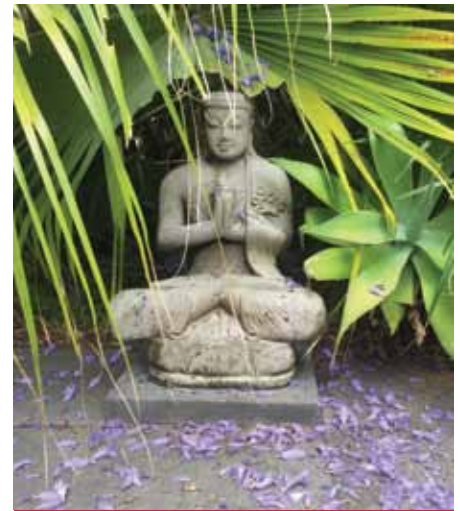
The theme of our SRE program is “Values and Life Skills”, which is aimed at teaching children values such as compassion, truth and patience. Life skills are taught so that young people can manage their lives in a busy and stress-filled world. Empowering them with these life skills at an early age, it is hoped that we will be giving them a solid foundation for their future.

In November 2016, there was an award ceremony in recognition of SRE providers in school communities held at NSW Parliament House with the attendance of 26 parliamentarians. An audience of 400 people gathered to support the value of SRE teachers in public education from all sides of politics.

John Barclay, our SRE trainer, received an award for the provision of individualised SRE programmes to his students. This has led to invitations to provide workshops in other schools and mentoring of new teachers.

We are very grateful to all SRE teachers who devote their time generously to bring the Dharma to share with students. We are also very grateful to all the donors for their support.

“*Values and Life Skills*” is aimed at teaching children values such as compassion, truth and patience.



Training Unit

The Training Unit continued workshops to help train community volunteers in three important areas: chaplaincy, teaching children (SRE) and good governance.

More chaplains were trained in the Clinical Pastoral Education (CPE) course which is a five day (40 hour) workshop to provide volunteer chaplains with the skills they need to help inmates in prisons and patients and their families in hospitals. Chaplaincy skills are also useful for helping people in nursing homes.

We continued to train more volunteer SRE teachers, so that more of our young children can learn values and life skills. The training for SRE will require expansion in 2017 to meet the increasing need from schools for Buddhist SRE teachers.

Our good governance workshops built on the success of the previous year. A new course called **TM37 - Skills to grow your Buddhist Centre** is part of a training series intended for management committees, board directors and administrators of Buddhist centres, temples and societies to provide the skills required to develop and strengthen Buddhist organisations.



Tammy Tran, Debra Kelly and John Barclay at the event.



Chaplaincy Program

The Buddhist Council has a strong team of dedicated chaplains who commit their time to visit hospitals and prisons, while some are also available on-call. The core principle of this program is to offer emotional and spiritual support for those in need through the practice of loving kindness, compassion and listening.

The demand for Buddhist Chaplains is currently increasing in both prisons and hospitals due to the growth in awareness of the benefits of meditation.

We appreciate all the kind hearts and incredible generosity of our chaplains. They offer great support to those who are suffering hardship and challenging times. They also empower people to change their lives.

We are thrilled to acknowledge the support of Rev. Alan Galt, who has run the Introductory CPE course for the Buddhist Council over the past ten years and has been crucial to the growth of Chaplaincy in NSW. Ana Brando's work as Chaplaincy Coordinator has also been invaluable.

With the growth in the number of hospitals and prisons recently, we are able to provide 11 prison chaplains and 17 hospital chaplains. These figures are expected to be higher in 2017. We are continuously seeking interest from those in the community who are considering training to become a chaplain.

In 2017 and beyond, we aim to establish similar services for aged care facilities across the state.

11
PRISON CHAPLAINS
(8 lay & 3 ordained)

17
HOSPITAL CHAPLAINS
(14 lay & 3 ordained)



Website and Social Media



The Buddhist Council uses a number of tools to provide information to the community. The new website has been designed to be compatible with new smartphones and tablets (www.buddhistcouncil.org). It highlights five key functions: finding a Buddhist centre, finding a Buddhist event, member help, training volunteers and opportunities for volunteers.

External relations

The Buddhist Council of NSW works with the four other Buddhist Councils in Australia through the Federation of Australian Buddhist Councils (FABC). The FABC works closely with the Australian Sangha Association to provide a voice for all Buddhist traditions in Australia to the Federal Government on new legislation, regulations (for example religious worker visas) and other issues of importance to our community. The Buddhist Council of NSW is a member of the Religious Faith Leaders Forum organised by Multicultural NSW, a part of the state government. The Buddhist Council also represents the Buddhist community at interfaith events and when contacted by mainstream media such as press and radio.



Member Help

Providing advice, resources, information and ways to reduce costs to help our member organisations.

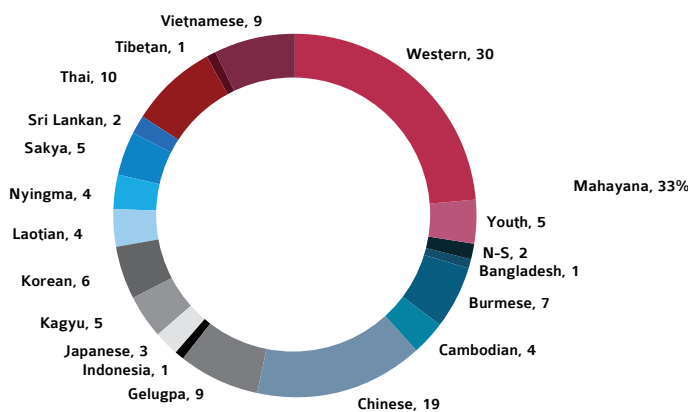
Member Help includes services such as: public liability insurance; professional and expert advice from our Member Service Team; use of the BCNSW member crest; support and advice when dealing with the government; promotion and publicity for member events on our website; exemption from the Charitable Fundraising Act; free Buddhist books; and updates and information relevant to the Buddhist community.

Our Members: AABCAP, Adeikhtan Buddhist Missionary Company (Aust), Aloka Community Inc., Amitabha Buddhist Association of NSW Inc., Amitabha Foundation (Australia), AMRTA Monastery, An Khong Association Inc, Association of Engaged Buddhists, Australia Buddhist Foundation, Australian Buddhist Mission, Australian Chinese Buddhist Society, Australian Chinese Pure Land Buddhist Association, Australian Contemplative Observatory, Australian Institute of Buddhist Learning and Practice, Australian Institute of Tibetan Healing Practices, Bangladesh Australia Buddhist Society, Barom Kagyu Chodrak Drupju Chuling, Bhante Sujato in Sydney Group, Blue Mountains Insight Meditation Centre, Blue Padma Services Inc., Bluegum Sangha, Bodhi Books & Gifts, Bodhikusuma Buddhist & Meditation Centre, Buddha's Light International Assoc of Aust Inc, Buddhist Compassion Relief Tzu-Chi Foundation Aust, Buddhist Peace Fellowship / Kalyana Mitta Sangha, Bul-Kwang Meditation Institute, Bup Bo Temple, Cambodian Buddhist Society Inc of NSW, Chagdud Gonpa Australia, Chan Tam True Mind, Contemplative

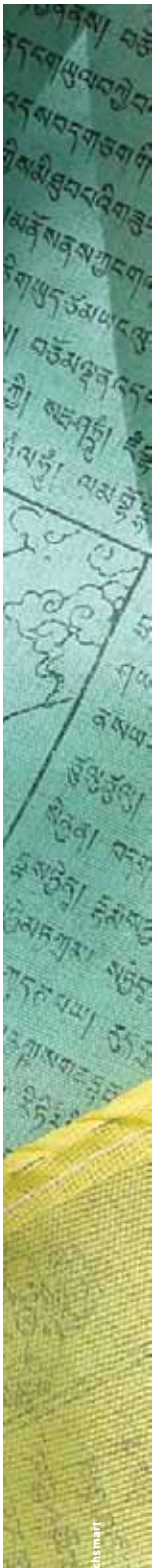
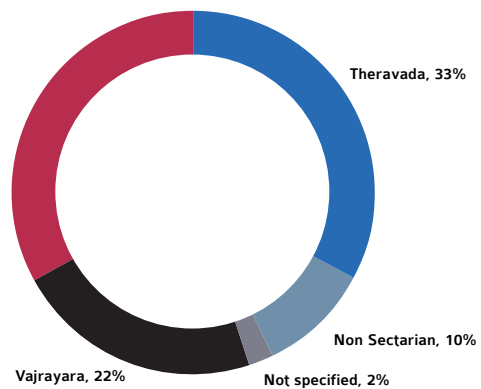
End-of-Life Care Southern Highlands Inc., Dhammaduta Buddhist Association of Australia, Dhammaduta Buddhist Association (Coffs Harbour), Dhammaduta Foundation Incorporated, Dharmakaya International Society of Aust, Dharma Drum Mountain Sydney, DharmaCloud, Diamond Cutter Buddhist Study Centre, Diamondway Buddhism Sydney, Ding Hui Monastery, Drogmi Buddhist Institute, Dzogchen Community of Namgyalgar, Golden Wheel Buddhist Association, Hongwanji Buddhist Mission of Australia, Huayen Buddhist Community of Australia Inc, Indonesian Buddhist Society of NSW, International Cham Shan Temple, Kalyanamitra & Bodhicitta Foundation, Kampuchea Krom Cultural Centre Inc., Karma Dro Phan Ling Institute, Karma Samten Choeling Inc., Karma Yiwong Samten Ling Buddhist Centre Inc., Kempsey Buddhist Meditation Group, Khachodling Inc., Khmer Krom & Aust Buddhist Assoc, Korean Buddhism Jongbopsa Society (The), Koyasan Shingon Mission Of Australia, Kuan Yin Buddhist Temple, Kunsang Yeshe Retreat Centre Inc., Kwan Um Sa, Kwan Yin Kur Temple, Kyegu Buddhist Institute, Lao Buddhist Society of NSW, Liberation Prison Project Australia Ltd, Lin Yim Buddhist Institute, Ling Yen Mountain Temple (Australia), Macquarie University Buddhist Association, Maha Bodhi Monastery, Mahamakut Wat Buddharingsee Stanmore Inc., Mahamevnawa Bhavana Monastery & Meditation Centre of Sydney, Man Su Vihara, Manjushri Buddhist Centre Inc, Metta Centre Incorporated, Mitra - Youth Buddhist

Network, Mukyoho, Nan Tien Temple, No Problems Publishing Inc., Open Way Zen Centre, PAL Buddhist School, Panditarama Sydney Meditation Centre Inc., Phuoc Hau Temple, Pointing Out Australia, Prajna Monastery Australia Inc., Prasarn Bun Prasarn Jai Group, Quan Am Thien Tinh Buddhist Charitable Assoc, Recollective Awareness (Aust), Rigpa Fellowship Inc., Saky Tharpa Ling, Santi Forest Monastery Inc., Sasana Daja Burmese Temple, Shantideva Buddhist Foundation Limited, Siangthum Phrapotiyan Incorporated, Siddhartha's Intent Australia, Silky Oak Zen, Sri Lankan Buddhist Vihara Association, Sunnataram Forest Monastery, Supporters of Homeless Buddhist Monks NSW, Sydney Burmese Buddhist Vihara Inc., Sydney Insight Meditators, Sydney Meditation Centre, Sydney Zen Centre, Tashi Choling Buddhist Institute, Tharpa Choeling Inc, Theravada Buddhist Association of Australia Inc., Tibetan Buddhist Society (Sydney), Tinh Xa Minh Dang Quang, Triratna Buddhist Community (Sydney) Inc., Unibodhi - University of Sydney Buddhist Society, Unified Vietnamese Buddhist Congregation of A-NZ, University Buddhist Education Foundation, UTS Buddhist Meditation Society, Vajrayana Institute Inc., Vien Giac Temple, Vinh Nghiem Pagoda Buddhist and Charitable Soc., Wat Buddha Dharma Foundation Ltd, Wat Buddhavarnam Inc, Wat Buddharingsee, Wat Buddhavongsa-Yaram, Wat Dhamma Sameakky, Wat Lao Buddhassetta, Wat Pa Buddharingsee, Well-Aware-Ness Psychology, Wisdom Song, Won Buddhism of Australia, Won Buddhism of Gosford Assoc Inc, Zen Open Circle Inc.

Culture



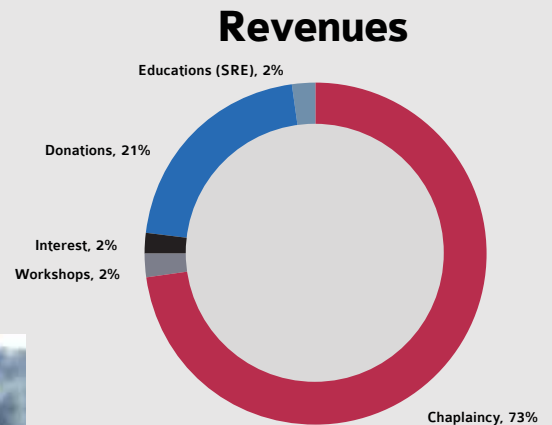
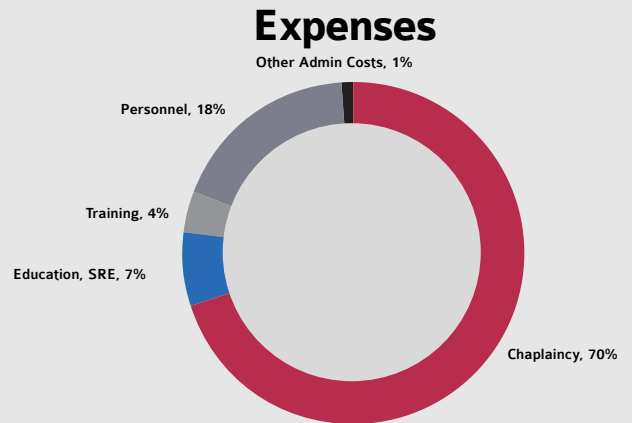
Tradition



Financial Summary

This year, the Buddhist Council has generated a small deficit of \$3,397. Total revenue for 2016 was \$166,414 which was 10% down from last year (\$186,084) due to a drop in donations received and fewer training workshops during 2016. Total expenses for 2016 (\$169,811) were slightly higher than last year (1% increase). In 2016, we invested in more resources such as books for our SRE programme and more chaplaincy visits.

The Council's financial position is therefore slightly reduced due to the deficit. The Buddhist Council has been growing steadily as can be seen from the summary of the five-year results shown below. In 2016, our focus was to expand our resources to assist teachers in the SRE programme and provide more care and support through chaplaincy visits. A full set of 2016 Financial Statements and the Auditor's Statement have been published. Please contact our office for more details.



Five Year Financial Summary of the Buddhist Council	2012	2013	2014	2015	2016
Income	122,267	146,924	172,450	186,084	166,414
Expenses	120,961	132,538	153,760	168,134	169,811
Operating Surplus	1,306	14,386	18,690	17,950	-3,397
Increase in Members' Funds	1,306	14,386	18,690	17,950	-3,397
Total Members' Funds	95,097	109,483	128,173	146,123	142,726



Credit: Hflow.com.au



Governance Review

Using experience in assisting member organisations over the years, the Buddhist Council has developed an assessment method, which indicates the level of attainment on a number of governance criteria. This assessment is the foundation of the governance training offered by our training unit to help our member organisations. The constitution requires some minor updates to reflect the board and management structure. This is expected to be addressed in 2017.

Directors and Board Meetings

Our constitution allows up to nine board directors. In addition to the Annual General Meeting we had four board meetings. In 2016, the seven directors met as follows:

Brian White	4
Ben Webster	4
Ranmal Samarawickrama	4
Les Tscherne	4
Lianne Ngo	3
Gawaine Powell-Davies	3
Ariya Chittasy (<i>joined late 2016</i>)	1



Gawaine, Lianne, Les, Brian, Ben, Ranmal, Ariya (inset)

Category	2016 Attainment	Comment
Governing body	★★★	Our board is merit-based
Governance	★★★	Governing body focused on good governance
Constitution	★★	Incorporated, but constitution requires update
Clear Purpose	★★	Clear objects in constitution understood by core team, volunteers, staff and our members
Solvency	★★	We can pay all debts due in next 12 months
Financial Management	★★★	We conduct an independent audit each year
Reporting Internal	★★★	Our annual report is performance based
Reporting External	★★★	Publicly accessible annual report (on website)
Performance monitoring	★★	Some Key Performance Indicators (KPIs) in place
Compliance	★★	Registered for GST, BAS, GST credits
External Relationships	★★	With local government, neighbours and local community
Clear direction	★★	Strategic direction is agreed and documented
Risk Management	★★	Key risks understood and addressed generally

The attainment is at four levels: Non-compliant (no stars), Compliant (1 star), Functioning (2 stars) and Flourishing (3 stars).



Buddhist Council of NSW

Working for the Buddhist Community

The Buddhist Council of NSW does not receive government grants. We depend on donations from the community.

O U R V I S I O N :
A Dharma community with open arms.

O U R M O T T O :
Working for the Buddhist Community

Buddhist Council of New South Wales Incorporated
ABN: 18 550 218 989

POST: PO Box 593, Crows Nest NSW
1585 Sydney Australia

APPOINTMENTS:
Unit 25, 56 – 62 Chandos Street
Leonards NSW 2065
t: (02) 9966 8893
e: office@buddhistcouncil.org
www.buddhistconnection.org